

PART OF SECTIONS 29 & 32, T.7N., R.1E., S.L.B. & M.

SILVER BELL ESTATES NO. 2

LOTS 72, 82-89 & 115-121

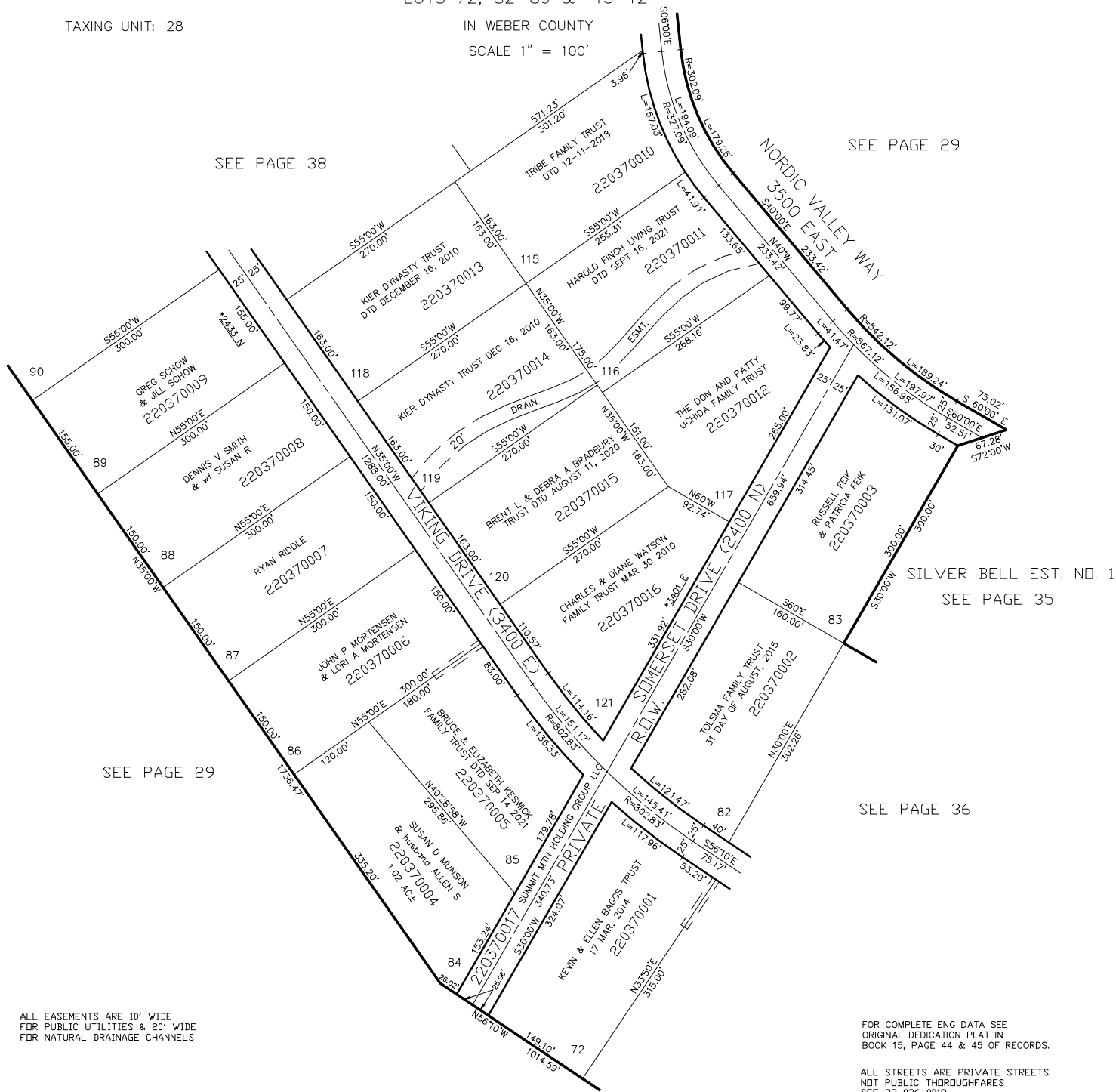
TAXING UNIT: 28

IN WEBER COUNTY

SCALE 1" = 100'

SEE PAGE 38

SEE PAGE 29



ALL EASEMENTS ARE 10' WIDE
FOR PUBLIC UTILITIES & 20' WIDE
FOR NATURAL DRAINAGE CHANNELS

FOR COMPLETE ENG DATA SEE
ORIGINAL DEDICATION PLAT IN
BOOK 15, PAGE 44 & 45 OF RECORDS.

ALL STREETS ARE PRIVATE STREETS
NOT PUBLIC THOROUGHFARES
SEE 22-036-0019

*ADDRESS AFFIDAVIT E#2970371, E#3197194

FOR TAX PURPOSES ONLY

MTT 12-96